



CATHEXIS®

CathexisVision®

Video Monitoring Solutions

CathexisVision video management software satisfies security, infrastructure, and health and safety management requirements in diverse market sectors, helping customers worldwide to **simplify life** and **secure the future**.

Choose CathexisVision for:



Effective site management



Control room efficiency



Situational awareness



Integrated solutions



Reliable evidence

SIMPLIFY LIFE. SECURE THE FUTURE.



Control Room & Sites

Our powerful site management solutions improve **situational awareness**, mitigate risk, and speed up response times.



Camera Support

CathexisVision supports the most popular camera brands

- Support includes multiple video streams, audio, input/output control, on-camera analytics and recording, and fisheye camera de-warping
- Reference image analysis
- Integration with thermal cameras



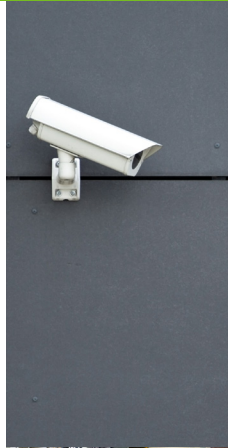
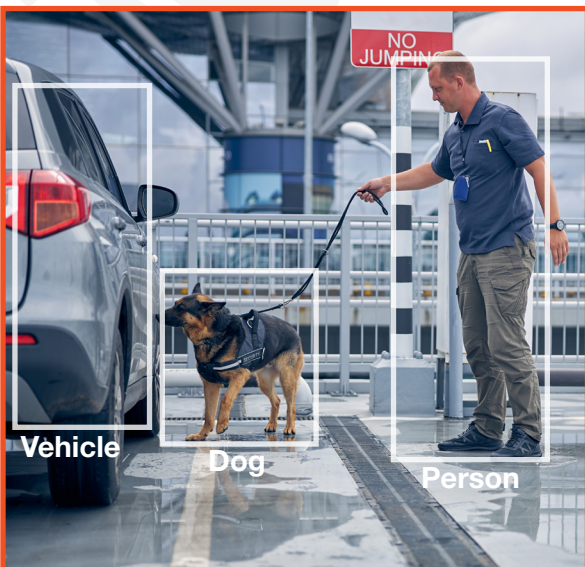
Adjacent Camera Mapping

- Track movement across cameras
- Live and recorded footage



Video Analytics

- Integrate on-camera analytics
- Health and safety algorithms (proximity analysis, occupancy counting, face and mask detection)
- Reduce false alarms
- Multi-zone detection
- Direction, speed, line-crossing
- Object classification using AI / neural networks (people, animals, vehicles)



CathexisVision Mobile

- Simple operation
- Quick analysis
- Greater control
- Customisable options



Upgradeable Architecture

- Easily upgradeable and scalable



Events & Alarms

- Rules-based configuration enables events to set off actions
- Actions include switching cameras, emails, alarms, audio clips and more
- Black screen monitoring
- Alert operators to relevant alarms and associated cameras
- Search and reporting tools

CathexisVision[®] ENTERPRISE

- Manage an entire domain of sites
- Hardware and system health dashboards
- Central user and site update management

Carbon

A sleek user interface with an enhanced feature set and improved performance, Carbon offers the ultimate in operator ease-of-use.



Search & Export

Smart Search features speed up the review of recorded footage. Find and export **specific, relevant footage** easily.



Snap Search

- Pinpoint an incident's time using linked snapshots and play video immediately



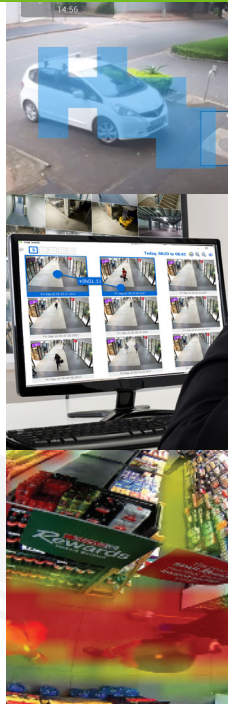
Motion Search

- Find recorded footage associated with motion in selected areas



Bookmarking

- Bookmark recorded footage, add comments, and search databases



Archiving / Exporting

- Retrieve and export evidence securely



Activity Trails

- Overlay of latest activity in camera view



Heat Maps

- Colour-map overlay depicts amount of movement in the camera view



Database Filtering

- Filter footage and metadata



Ease of Use & Stability

Easy setup and navigation, system **reliability** and **low maintenance** maximise up-time and cost-effectiveness.



Setup Wizards

- Quick setup process for cameras, databases, recording, analytics and more



Camera Parameter Cloning

- Copy and paste settings across cameras



Video Wall

- Allow multiple users to view video and map interfaces simultaneously
- Display footage on multiple monitors
- Switch cameras on events
- Layouts are controlled via a mimic panel



Flexible Storage Solutions

- Support for Network Storage systems as well as on-server storage options
- Multiple, user-defined databases
- Store critical video in more than one database simultaneously



Diagnostics

- Real-time and historical system analysis
- Troubleshoot problems by monitoring video streaming, recording bitrates, live viewing statistics & network throughput



Health Monitoring

- Send alarms to selected recipients
- Monitor a wide range of parameters



Failover Redundancy

- If a server fails, a 'failover' server will automatically perform its tasks
- When the failed server is replaced, all configuration and recorded footage is ported back to the replacement server



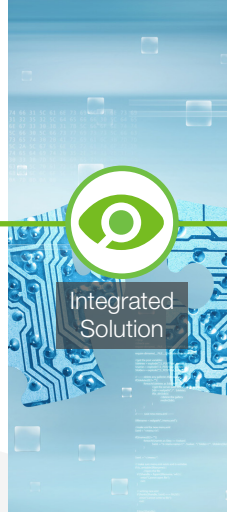
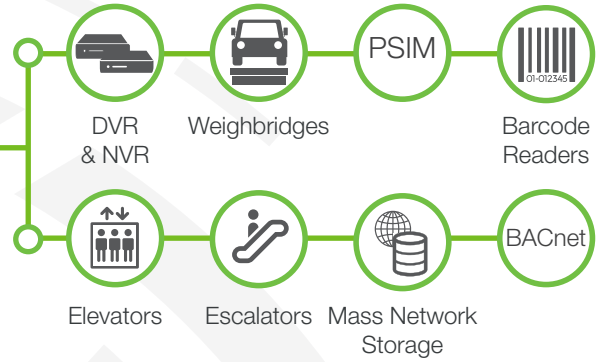
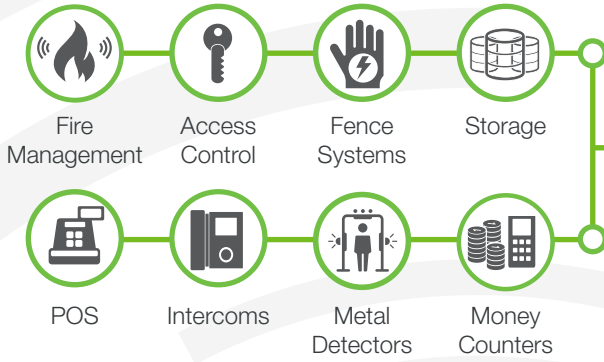
Maps

- Multi-layered, interactive interface
- Represent and control site resources



Integration

Integration with third-party systems provides **video verification** of events and **automated** responses.



ANPR

- Automatic Number Plate Recognition
- Low and high-speed applications
- Number plate information is databased along with associated video
- Compare recognised number plates with lists of authorised vehicles in real time
- Parking and access control applications
- High-speed freeway detection
- Traffic rules (average speed, reporting, loitering and repeat detections)



Integration Overlays

Luke
Cathexis
Allowed In
Main Entrance

VW Polo
Silver VW Polo Hatch
Staff, Test
ND111111

David



Security & Compliance

Files are protected, **information** is stored **securely**, and user access rights can be configured to ensure data security.



Cybersecurity and Privacy

- Cryptographic techniques protect information
- Secure communication between system components



Access Rights Management

- Multiple levels of users, each with a unique username and password
- Administrators can manage users across the site or multiple sites



CatObserver

- Viewing monitor or screen can be configured as a virtual camera
- Record activity viewed on the screen
- Access and archive footage easily without needing to retrieve footage from all the cameras involved



Protected Archives

- Face redaction algorithms
- Privacy zones





Market Sectors

CathexisVision meets the operational and security requirements of **diverse sites** and **industries**.



Airports



Banking



City Monitoring



Education



Healthcare



Hospitality



Housing



Logistics



Manufacturing



Mining



Transport



Retail



Cathexis has been developing security solutions for over 25 years. With offices and distributors around the world, Cathexis provides tailored video management solutions to an array of market sectors in over 65 countries.

CathexisVision 2024 Package Comparison

+ Available with license • Feature included – Not applicable

Features	LITE Single server package	CORE Single server product	PROFESSIONAL Medium to large site	PREMIUM WAN/large site
Upgradeable (to higher package)	–	•	•	–
Camera and Server Limits				
Max camera channels per site*	48	48	150	Unlimited
Max recording servers per site	1	1	Unlimited	Unlimited
Camera Support				
MJPEG, H.264, H.265 and MXPEG and ONVIF support	•	•	•	•
Multiple video streaming (per camera)	•	•	•	•
Thermal camera support	•	•	•	•
Audio and I/O support	•	•	•	•
Fisheye de-warping	•	•	•	•
Client Connections				
Max simultaneous connections (including local)	3	7	10	Unlimited
Viewing and setup client	•	•	•	•
Mobile client support	•	•	•	•
Useability and Functionality				
Multiple language support	•	•	•	•
Redundant failover server/s support	–	–	+	•
Interactive map support	+	+	+	•
Adjacent camera mapping	•	•	•	•
Audio recording and bi-directional	•	•	•	•
CatObserver (monitor recording)	+	+	+	+
Video Analytics				
Basic VMD	•	•	•	•
Cathexis SMART motion detection	+	+	•	•
Advanced analytics suite	+	+	+	+
Edge analytics support	•	•	•	•
Object classification (neural networks)	+	+	+	+
Face and facial landmark detection	+	+	+	+
Mask detection	+	+	+	+
Object/occupancy counting	+	+	+	+
Smart Search				
Snap search Motion search Activity trails Bookmarking	•	•	•	•
Storage				
Local storage (on recording server)	•	•	•	•
Network support	•	•	•	•
Edge storage	•	•	•	•
Event Triggers				
Physical input triggers	•	•	•	•
On-server analytics triggers	•	•	•	•
Edge analytics triggers	•	•	•	•
Third-party system event triggers	+	+	+	+
Technical alarm triggers	•	•	•	•
Event Actions				
Record pre-and post-events	•	•	•	•
Output control	•	•	•	•
Send SMS and email	–	•	•	•
Send alarm/event to Alarm Management Gateway	–	•	•	•
Video Wall control	•	•	•	•
Play audio clip	•	•	•	•
PTZ - move to a preset location on an event trigger	–	•	•	•
Send technical alarms to Alarm Gateway	•	•	•	•
ANPR (Automatic Number Plate Recognition)				
Low and high speed	+	+	+	+
Average speed measurement	+	+	+	+
Traffic rules	+	+	+	+
Integration				
Third-party systems integration	+	+	+	+
API integration	•	•	•	•
Video Wall				
Mimic panel	+	+	+	•
Camera and layout tours	+	+	+	•
Automatic camera and layout switching on events	+	+	+	•
Alarm Gateway Integration				
Technical alarms	•	•	•	•
Event alarms	–	•	•	•
Alarm escalation and tracking	•	•	•	•
Reporting				
System health reports	•	•	•	•
Customisable management reports	•	•	•	•
User Management				
Access rights control	•	•	•	•
User activity logs	•	•	•	•
MultiSite/Enterprise				
MultiSite support	–	+	•	•
Enterprise support	–	+	+	•

*Multi-sensor cameras or encoders utilise multiple channels in the software-level channel count, even when only a single license is required.

Disclaimer: While Cathexis has made every effort to ensure the accuracy of this document, there is no guarantee of accuracy, neither explicit nor implied. Specifications are subject to change without notice.